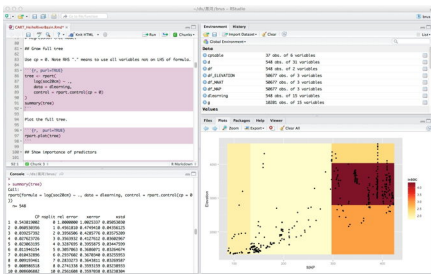
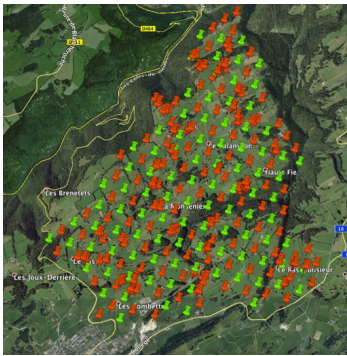
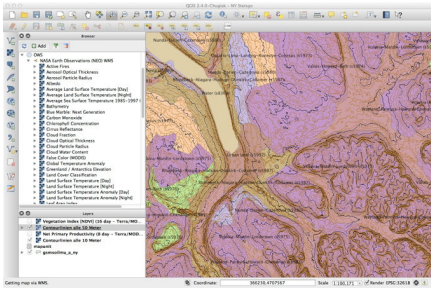


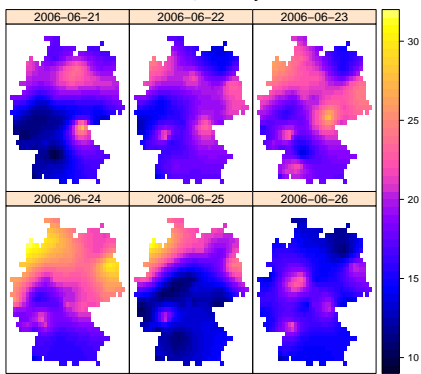
# PLSCS/NTRES 6200 Spring semester 2018

## Spatial Modelling and Analysis for agronomic, resources, environmental and regional studies

- Theory & practice of geospatial analysis for graduate and advanced undergraduates working with geospatial data in their research projects.
- Typology of spatial analysis, geostatistics, point-pattern analysis, areal spatial data analysis, spatial regression, spatio-temporal models, sampling, data sources...
- Emphasizes open-source tools R and QGIS
- Lectures T/Th 08:40–09:55; Lab T or W 13:25–16:25; 3 credits
- Half-semester research project in lab time

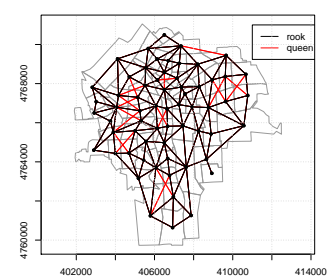


PM10, Germany



Metric model

Syracuse city census tracts, queen and rook neighbours



Variograms, log(Zn)

