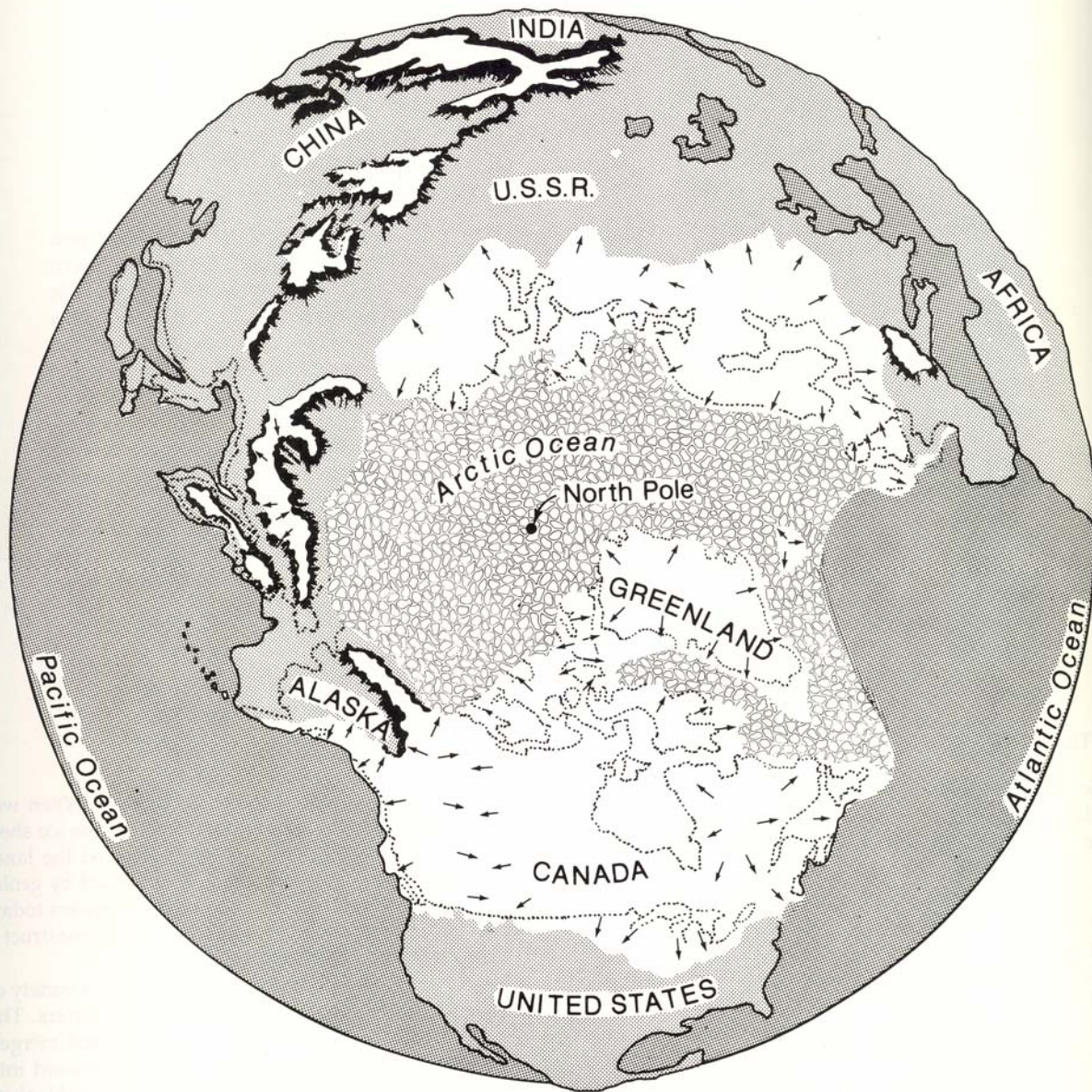
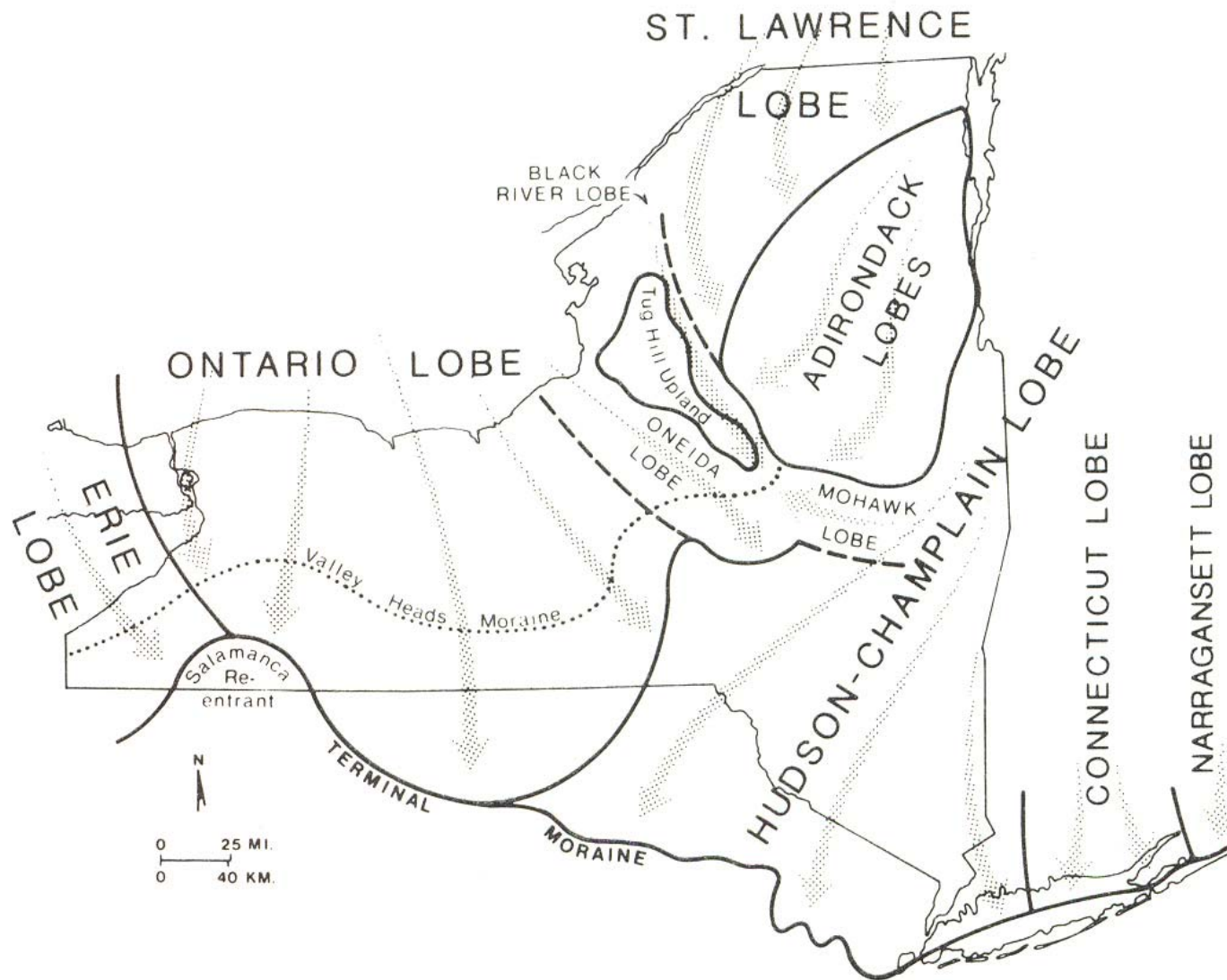


Landscape History of the Ithaca and environs

Source: Geology of New York: A simplified account, Educational Leaflet No. 28





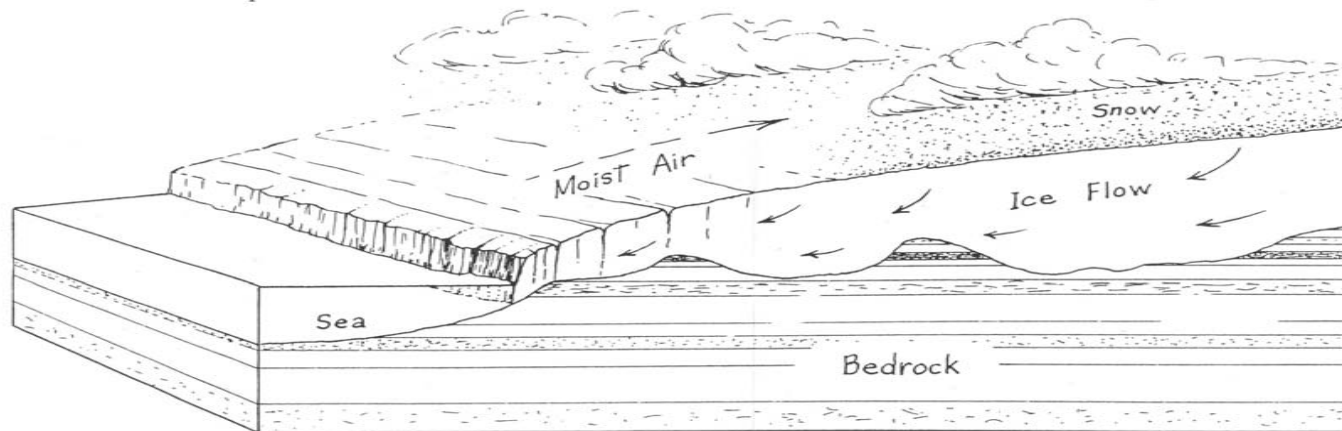
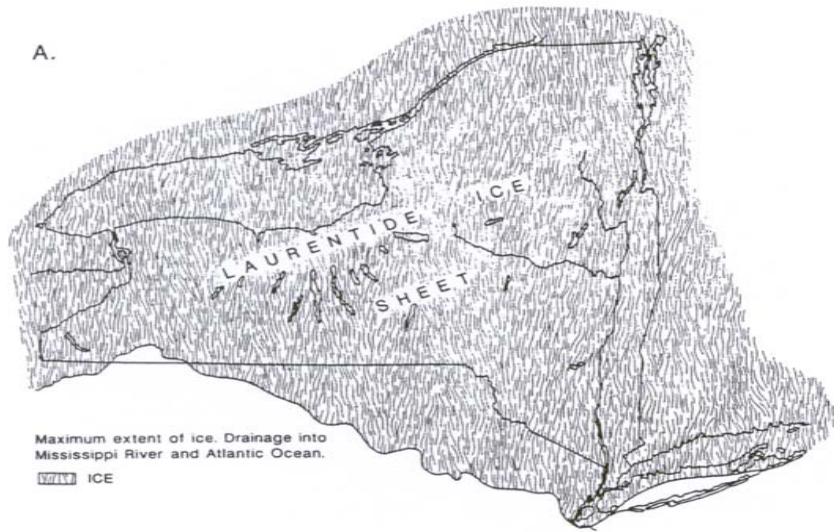
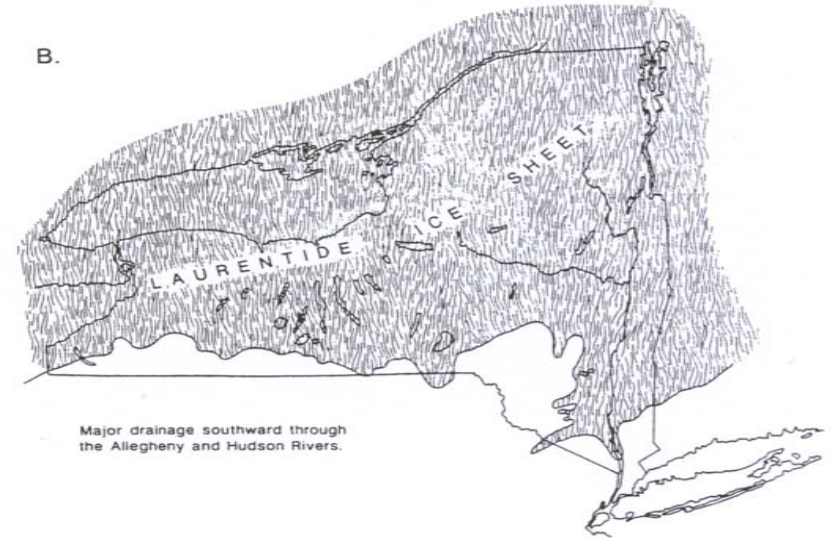


Figure 12.2. This diagram is a simplified cross section of an ice sheet. Notice the snow feeding the glacier behind the ice front and the ice flowing, even riding over low hills. (The vertical scale is highly exaggerated.)

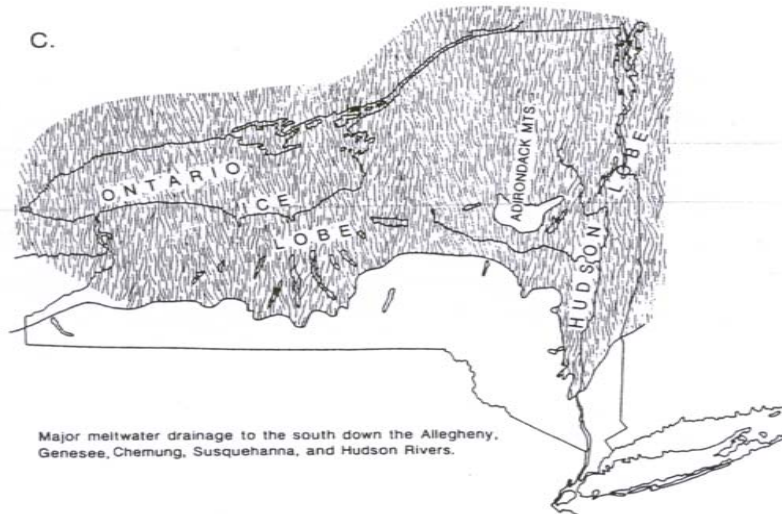
A.



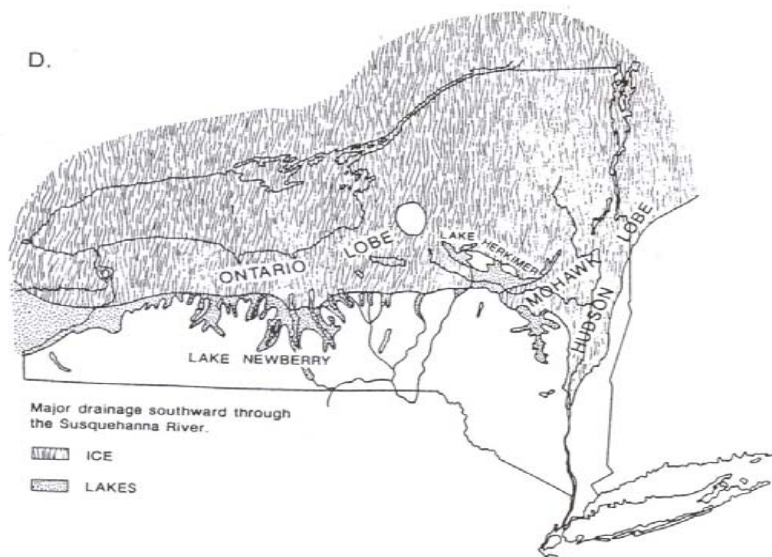
B.



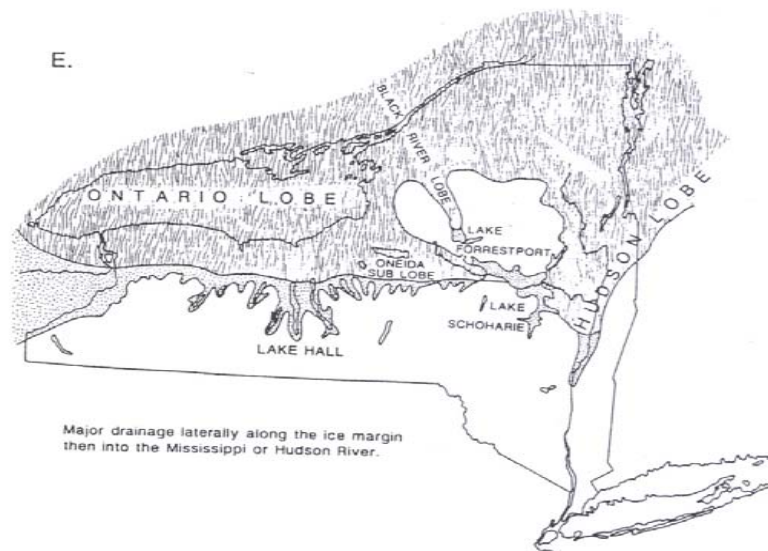
C.



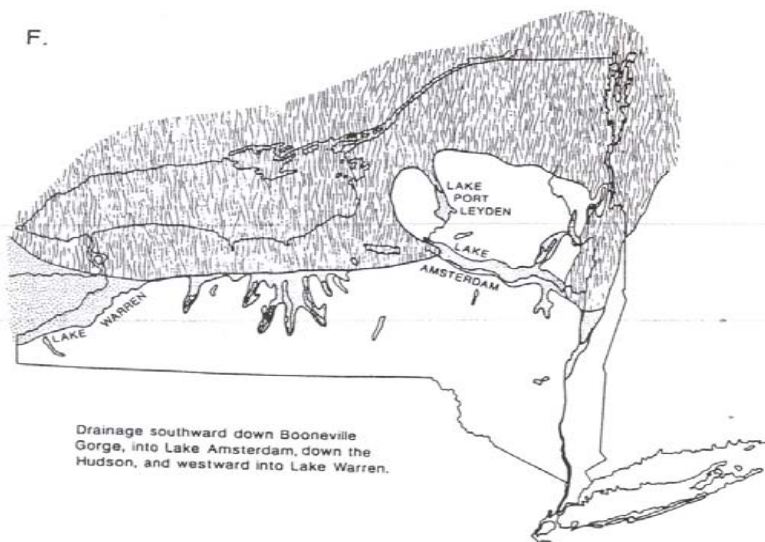
D.



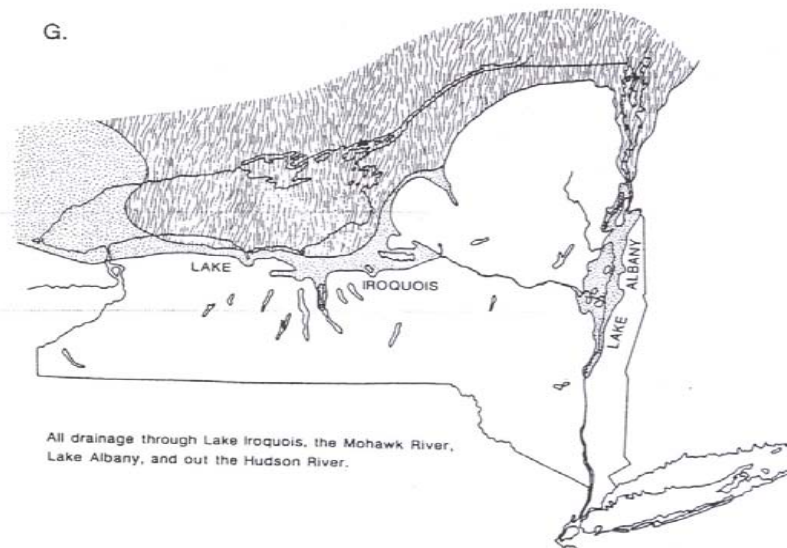
E.

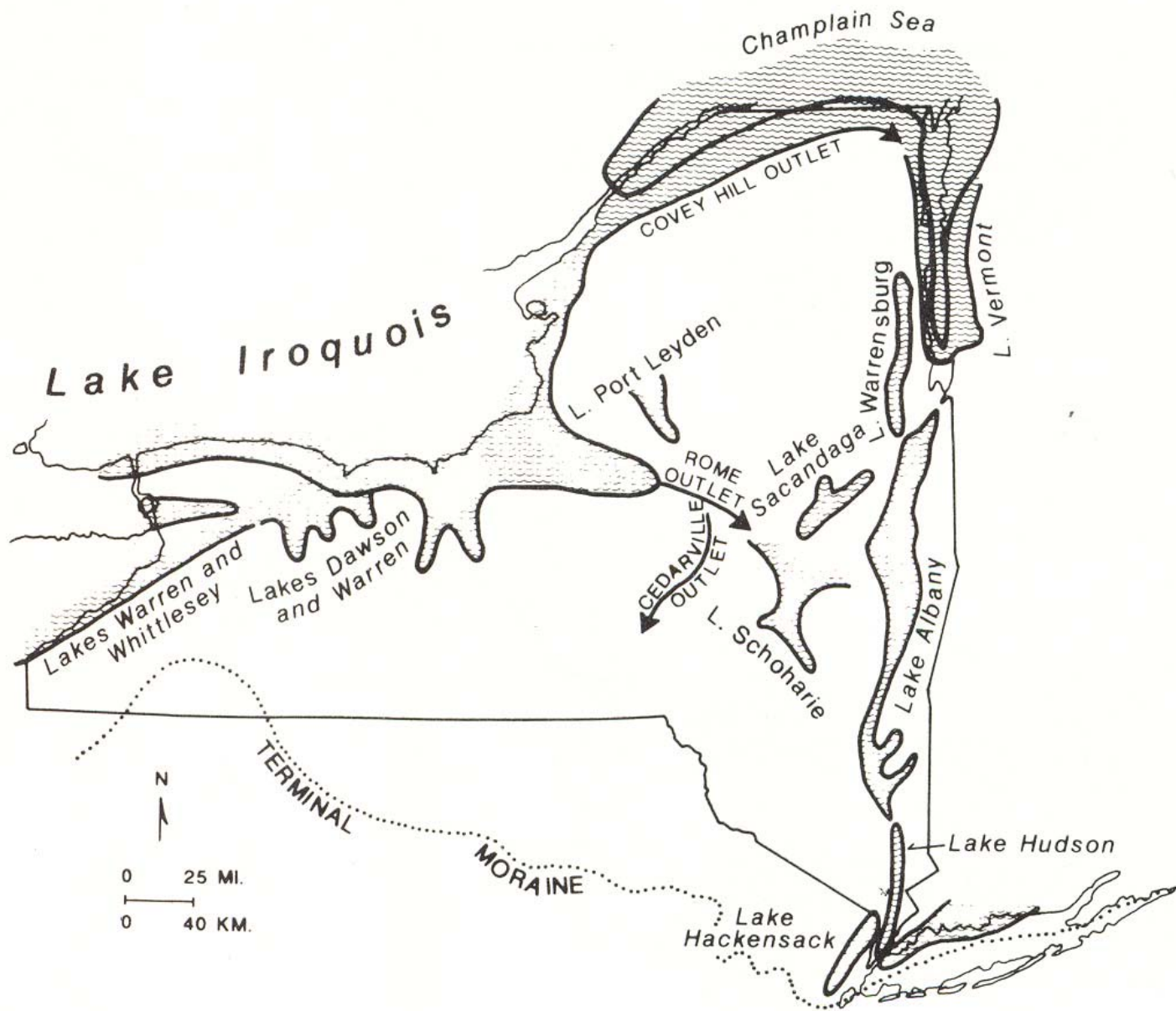


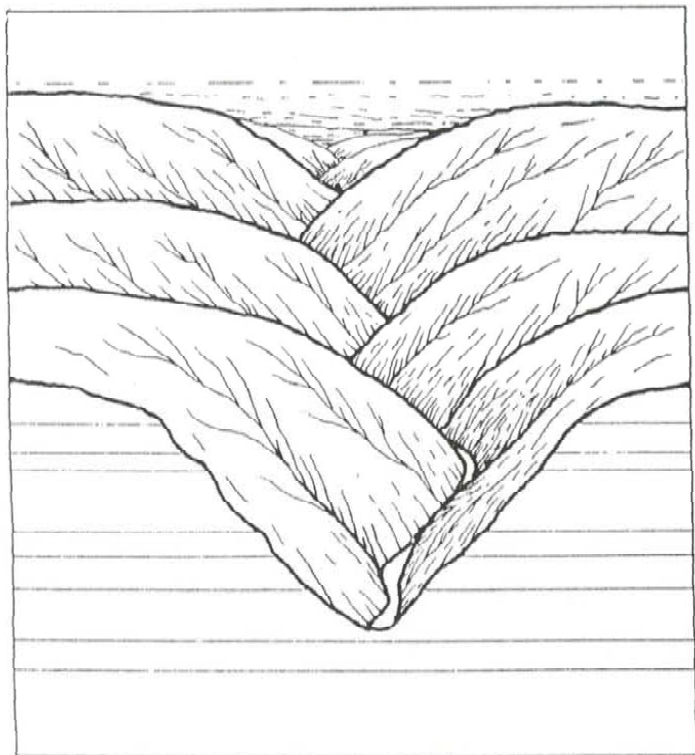
F.



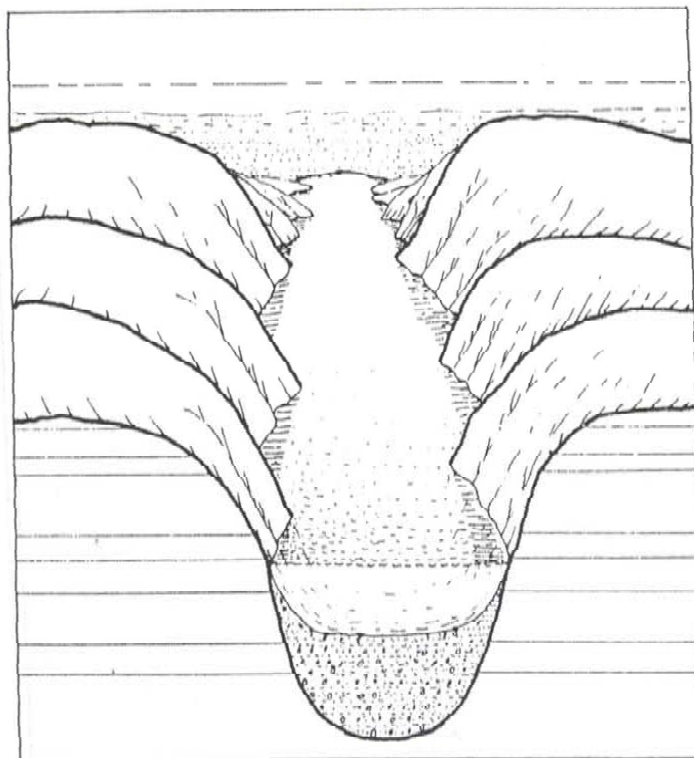
G.



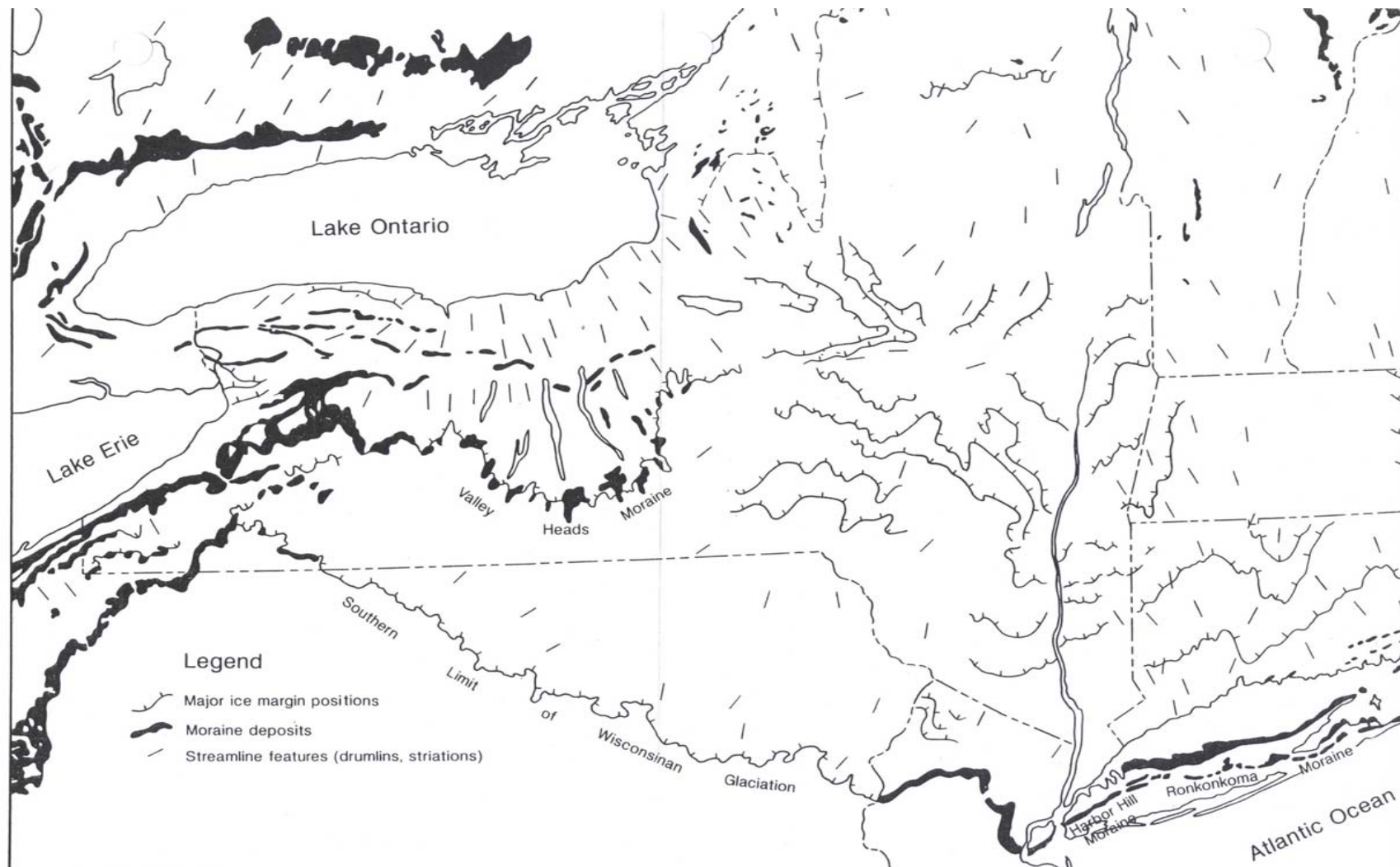


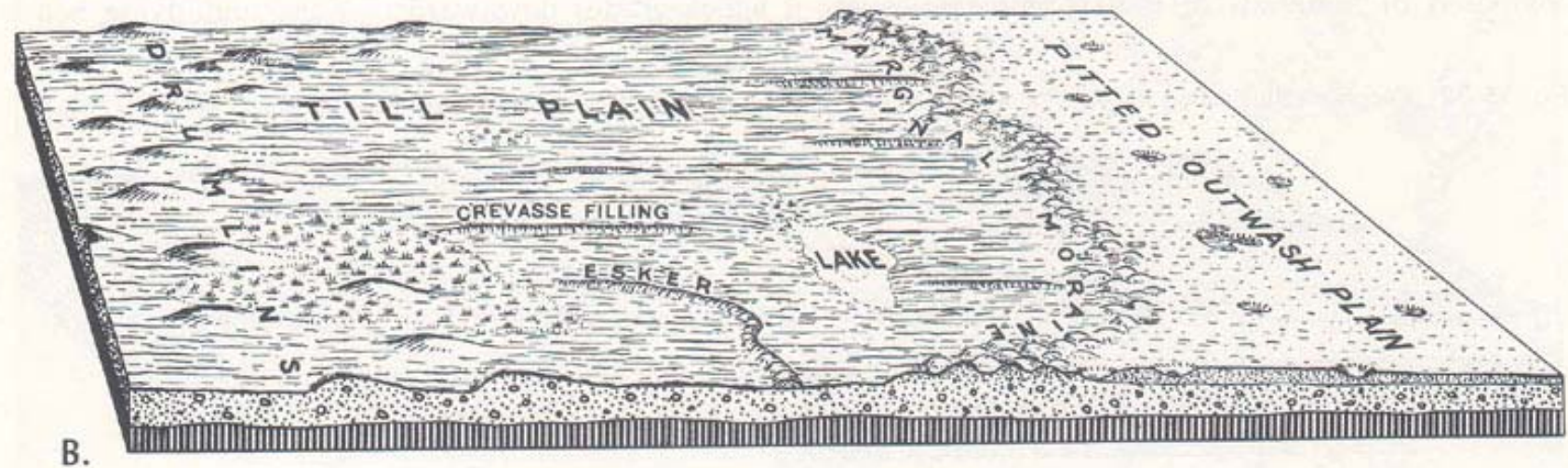
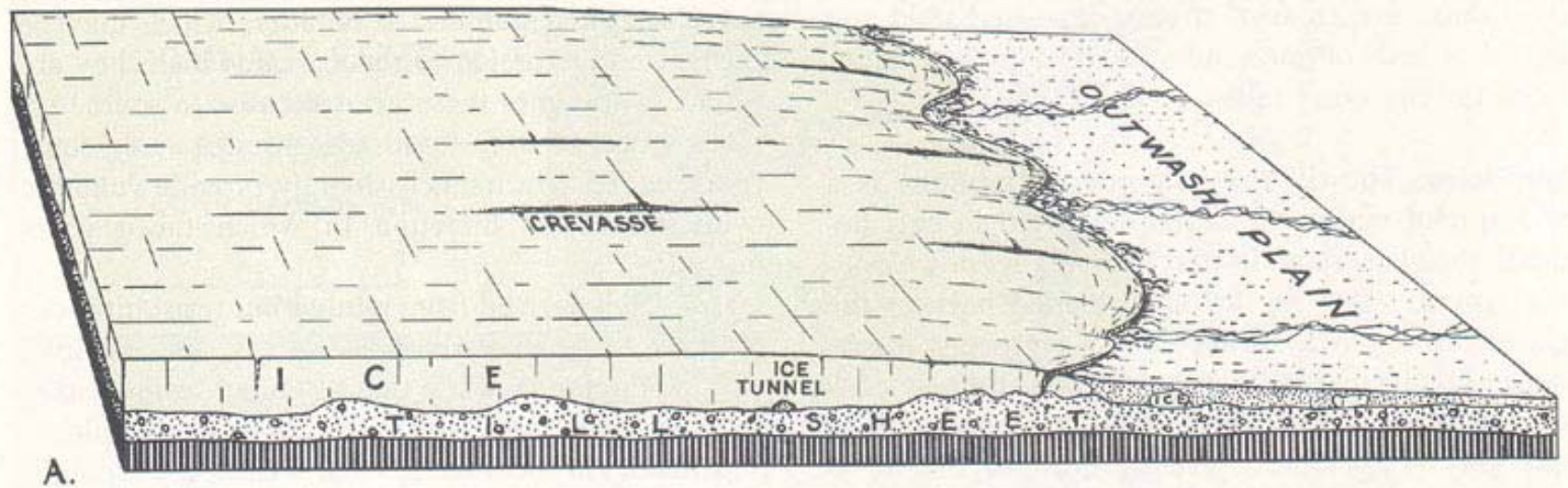


A



B





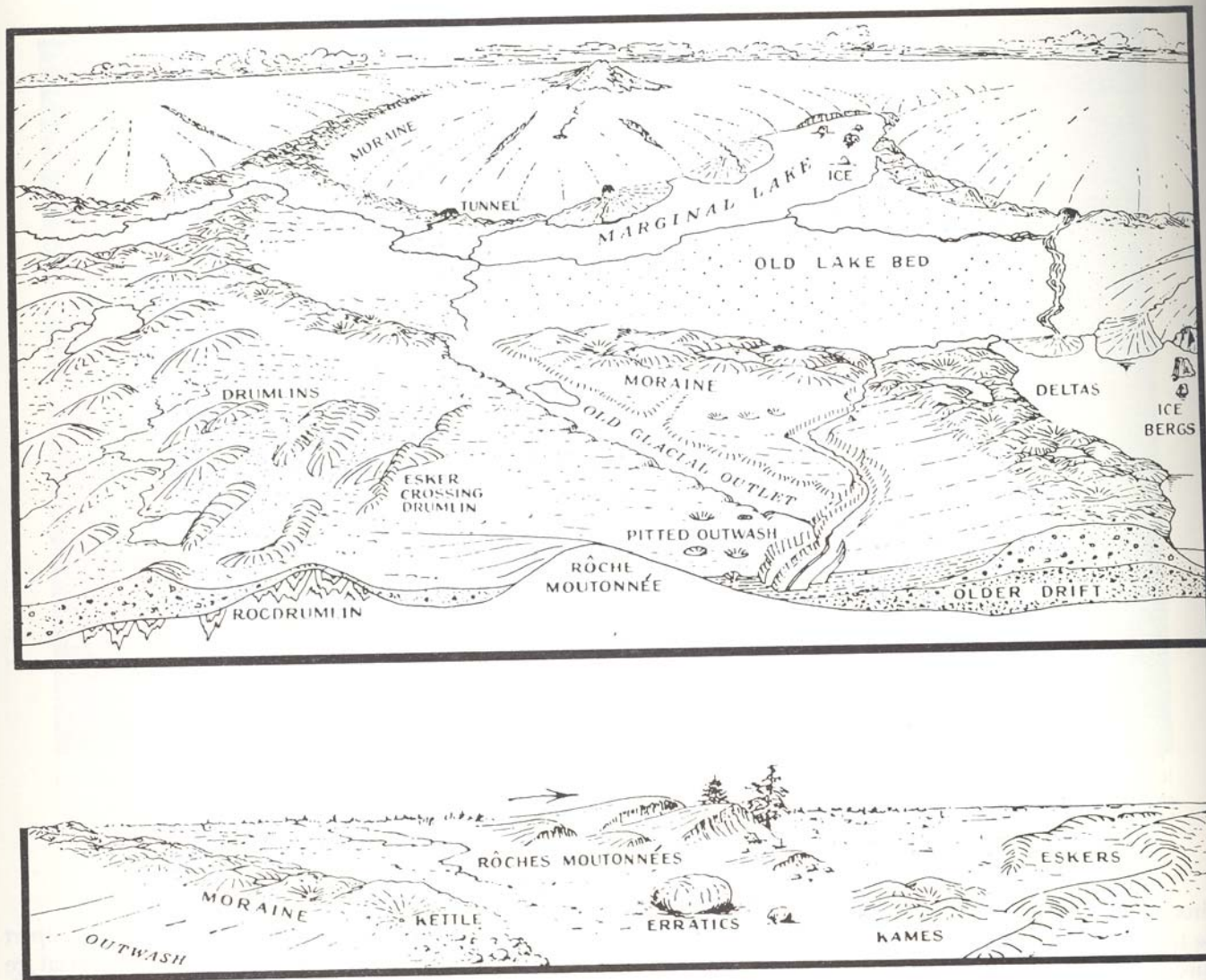


Figure 12.7. These diagrams show various types of landforms and glacial deposits left behind by continental glaciers. We study such features of New York's landscape and compare them with features of areas being glaciated today. With this information, we are able to deduce the glacial history of our State. (From *Geomorphology* by A.K. Lobeck. Copyright © 1939. Published by McGraw-Hill, Inc., New York, NY. Reproduced by permission of McGraw-Hill.)

